



# Wheatland-Chili Central School District Capital Improvement Project

## SCHOOL REPAIRS AND RENOVATIONS

### THE CAPITAL PROJECT WAS CAREFULLY PLANNED:

- Timed to have the least financial impact on taxpayers due to the retiring of existing debt;
- Based on 2015 Building Conditions Survey submitted to the State Education Department; and
- Focused on energy efficiency, health/safety, asset preservation/maintenance, technology/communications, accessibility upgrades, and site work.



### THE CAPITAL PROJECT IS FISCALLY RESPONSIBLE:

- Funded by 71.4% State Building Aid and \$1,663,000 Capital Reserve Fund; and
- Through the combined impact of **retiring debt**, the use of **excess building aid** from prior projects, and the **use of capital reserve funds**, taxpayers will see a **0% increase in taxes**.

### Fact Sheet

#### **Cost of Project**

\$11,113,000

#### **NYS Building Aid**

71.4 %

#### **Local Share**

28.6 %

#### **Project is offset by Capital Reserve Funds**

\$1,663,000

#### **Average Cost to Homeowner**

Through the combined impact of **retiring debt** and the **use of capital reserve funds**, taxpayers will see a **0% increase in taxes**.

### PUBLIC INFORMATION MEETINGS

Tuesday, November 28, 2017  
7:00 pm, MS/HS Auditorium

Tuesday, December 5, 2017  
7:00 pm, Board of Education  
Conference Room, third floor  
at T. J. Connor Elementary



December 14, 2017

7 a.m. – 9 p.m.

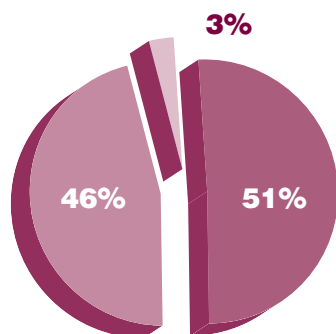
Middle/High School Gymnasium

940 North Road, Scottsville

On Thursday, December 14, 2017, polls will be open for the Wheatland-Chili Central School District community to vote on a capital improvement project. The proposition results from the 2015 Building Condition Survey reports required by New York State; organizing of the Building Condition Survey reports into the categories of **envelope/energy improvements, health/safety, asset preservation/maintenance, technology/communications, accessibility upgrades, and site work**; prioritizing of the work to be accomplished in the different categories by the Facilities Committee and the Board of Education members; and through community input.

### School Repairs and Renovations

Construction, installation, and equipment of renovations, alterations and improvements of the Wheatland-Chili Middle/High School, the T. J. Connor Elementary School, and the Bus Garage Facility, including site improvements for various school purposes and improvements to the athletic facilities at Middle/High School.



- TJC (\$5,663,808)
- MS/HS (\$5,130,733)
- Bus Garage (\$318,459)

**Cost: \$11,113,000**

**Below is a sampling of the projects at individual buildings, in addition to the general scope items, being proposed:**

#### T. J. Connor Elementary

##### Envelope | energy

- Select door replacement
- Replacement of spandrel window panels
- Masonry restoration

##### Health | safety

- Fire alarm system upgrades
- Supplemental emergency lighting

##### Asset preservation | maintenance

- Classroom renovations (flooring, HVAC, cabinetry & finishes)
- Replace boilers & associated piping, controls, etc.
- HVAC equipment & controls replacement (exhaust fans & unit ventilators)

- Select electrical panel replacement

##### Technology | communications

- PA system replacement & expansion

##### ADA (accessibility)

- Toilet room renovations
- Locker room renovations

##### Site

- Sidewalk improvements (ADA curbs)
- Landscaping/hardscaping improvements at front entrance

#### Middle/High School

##### Envelope | energy

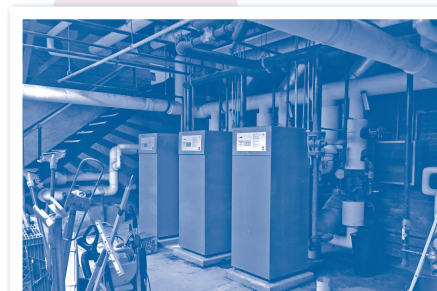
- Select door replacement
- Replacement of spandrel window panels
- Library window replacement

##### Health | safety

- Fire alarm system upgrades
- Replacement of pool lighting

##### Asset preservation | maintenance

- Renovation to the boys & girls gym locker rooms
- Gym renovations (ceiling improvements, bleacher, floor, & window replacement)
- Pool finish improvements
- Replace boilers & associated piping, controls, etc.



- HVAC equipment & controls replacement (air handling units, exhaust fans & unit ventilators)

##### Technology | communications

- PA system replacement & expansion
- Clock system replacement

##### ADA (accessibility)

- Paving/sidewalk improvements

##### Site

- Addition of scoreboard at varsity softball field
- New sidewalk along Chili Avenue
- Sanitary main improvements

#### Bus Garage Facility

- Fire alarm system upgrades
- Vehicle lift replacement
- Supplemental security lighting
- Exhaust system improvements

### How will the capital improvement project be funded?

The revenue necessary to fund this project is shown in the graph. The majority of funding will be provided by New York State in the form of building aid (estimated at 71.4%). The remaining 28.6% will be paid locally. The local share of the project is offset by retiring debt service, excess building aid from prior projects, and capital reserve funds in the amount of \$1,663,000. This allows the project to be funded without any additional tax increases.

